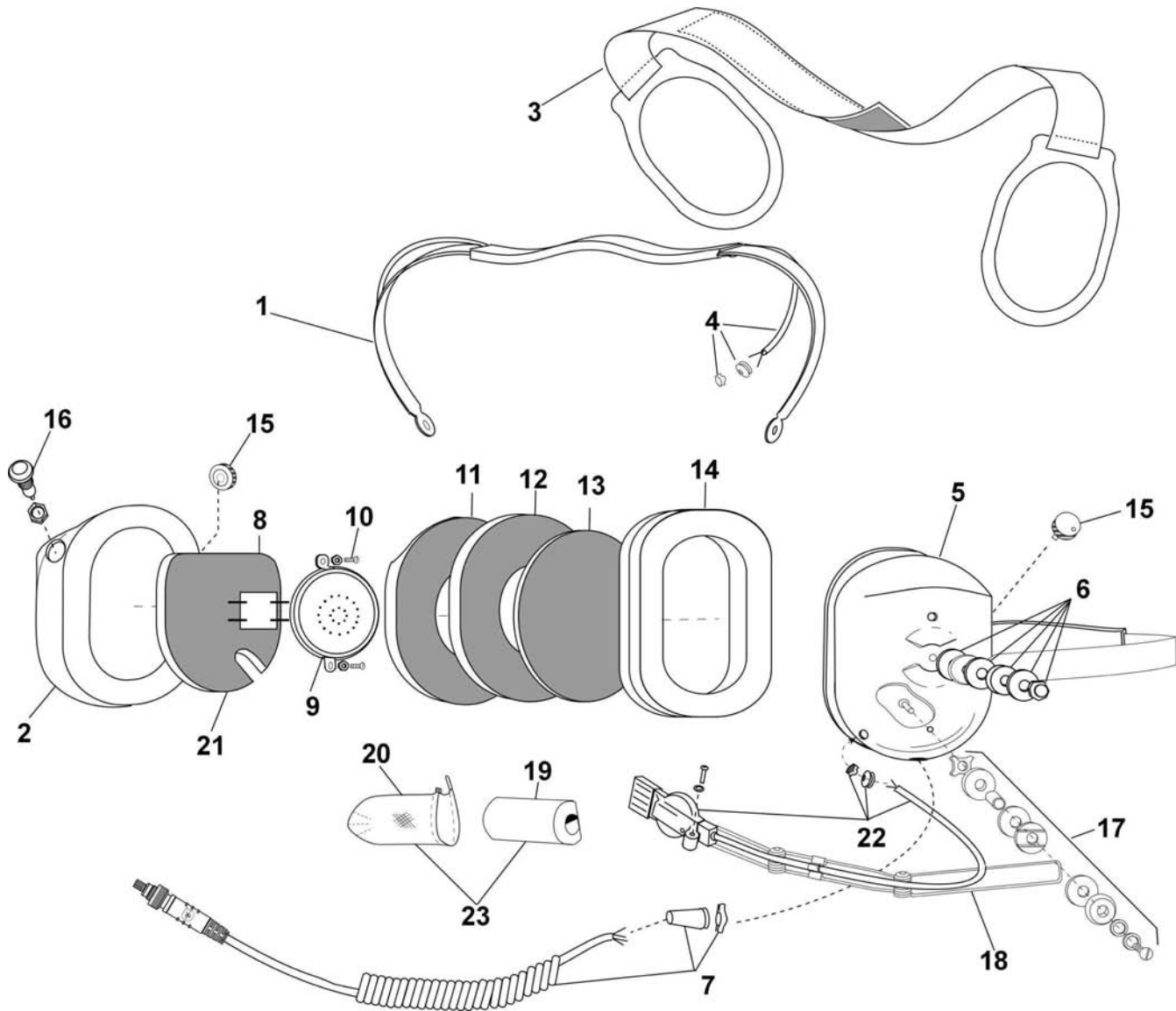


**PARTS LIST
MODEL H9842**



| No. | Description | Part No. |
|-----|----------------------------|-----------|
| 1 | Spring Assembly | 40623G-30 |
| 2 | Dome, Right | 15522P-30 |
| 3 | Support Assembly | 10370G-03 |
| 4 | Overhead Cord Assembly | 22607G-13 |
| 5 | Dome, Left (mic side) | 15522P-35 |
| 6 | Nut and Washer Kit (10 pk) | 12052G-04 |
| 7 | Comm Cord Assy Kit | 40599G-72 |
| 8 | Dome Filter | 11410P-02 |
| 9 | Earphone Assembly | 10376G-46 |
| 10 | Screw (10/pk) | 00023M-07 |
| 11 | Dome Filter | 25629P-05 |
| 12 | Dome Filter | 14096P-05 |

| No. | Description | Part No. |
|-----|-----------------------------|-----------|
| 13 | Filter | 14096P-09 |
| 14 | Undercut Gel Earseal (pair) | 40863G-02 |
| 15 | Volume Control | 09349P-40 |
| 16 | Switch Mic ON/OFF | 26619P-21 |
| 17 | Boom Guide Kit | 12840G-18 |
| 18 | Microphone Boom Assy | 12765G-09 |
| 19 | Screen, Wind, Mic | 14863P-01 |
| 20 | Cover, Windscreen | 18792G-02 |
| 21 | PCB Assy, Mic AMP | 40415G-54 |
| 22 | Mic, M87 IMM. PRF. w/Cord | 40910G-01 |
| 23 | Kit, Mic Cover/Windscreen | 40688G-94 |

ELECTRICAL SCHEMATIC MODEL H9842

