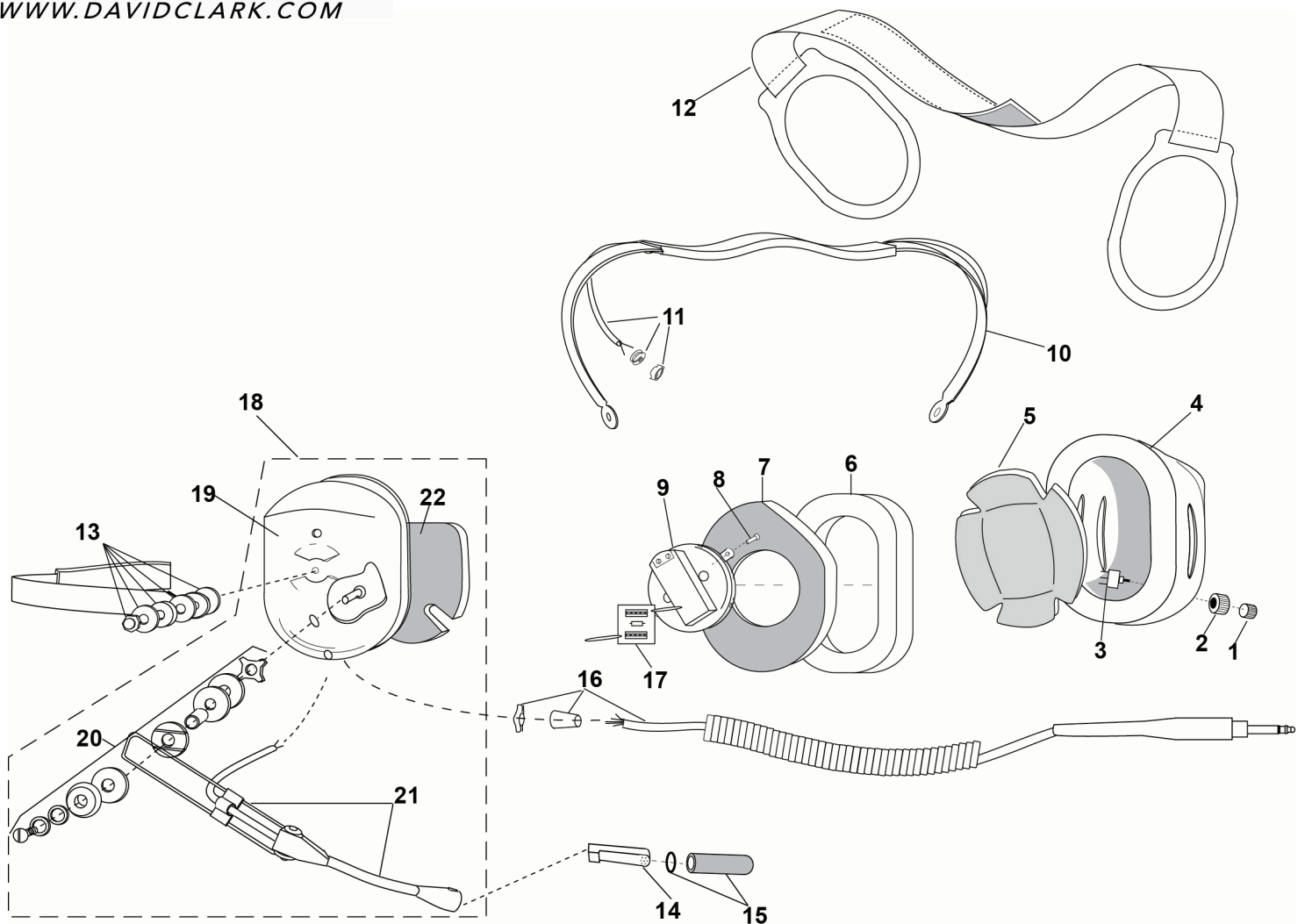


**PARTS LIST
MODEL H3441**


No.	Description	Part No.
1	Switch Cap Kit	41090G-13
2	Switch Guard	13148P-01
3	Push Button Switch	09851P-17
4	Left Dome	15522P-09
5	Dome Filter (1 each)	24636P-03
6	Undercut Gel Earseal (pair)	40863G-02
7	Filter	25629P-05
8	Screw (10/pk)	00023M-07
9	Earphone Assembly	10376G-17
10	Spring Assembly	10117G-97
11	Overhead Cord Kit	22607G-11

No.	Description	Part No.
12	Adjustable Strap	10370G-03
13	Nut and Washer Kit (10 pk)	12052G-02
14	M-7A Electret Mic	09168P-33
15	Mic Protector	40062G-02
16	Communication Cord Assy Kit	18028G-34
17	PCB Assembly	18289G-13
18	Kit, Dome & Mic Boom	40688G-71
19	Left Dome	15522P-07
20	Boom Attachment Kit	12840G-09
21	Mic Boom & Cord Assy	18740G-05
22	Dome Filter (1 each)	11410P-02

ELECTRICAL SCHEMATIC
MODEL H3441

